

**UNITED STATES
PATENT AND TRADEMARK OFFICE**



Piloting in the Patent Office

Daniel Ryman

Director of the Office of Patent Quality
Assurance

May 30, 2019

UNITED STATES
PATENT AND TRADEMARK OFFICE



Patent Office overview

The Patent Office

- Examines patent applications and grants patents on inventions when applicants are entitled to them
- Is completely fee funded
- In FY 2018,
 - Received over 643,000 patent applications
 - Mailed over 1.2 million “Office actions”
 - Allowed over 368,000 patent applications
 - Had 8,185 patent examiners (at the end of the fiscal year)



Patent Office's culture of continuous improvement

- Has strategic goals of optimizing patent timeliness and patent quality
- Routinely solicits feedback from internal and external stakeholders
- Gathers and analyzes data on many aspects of the patent examination process
- Uses collected fees as efficiently as possible

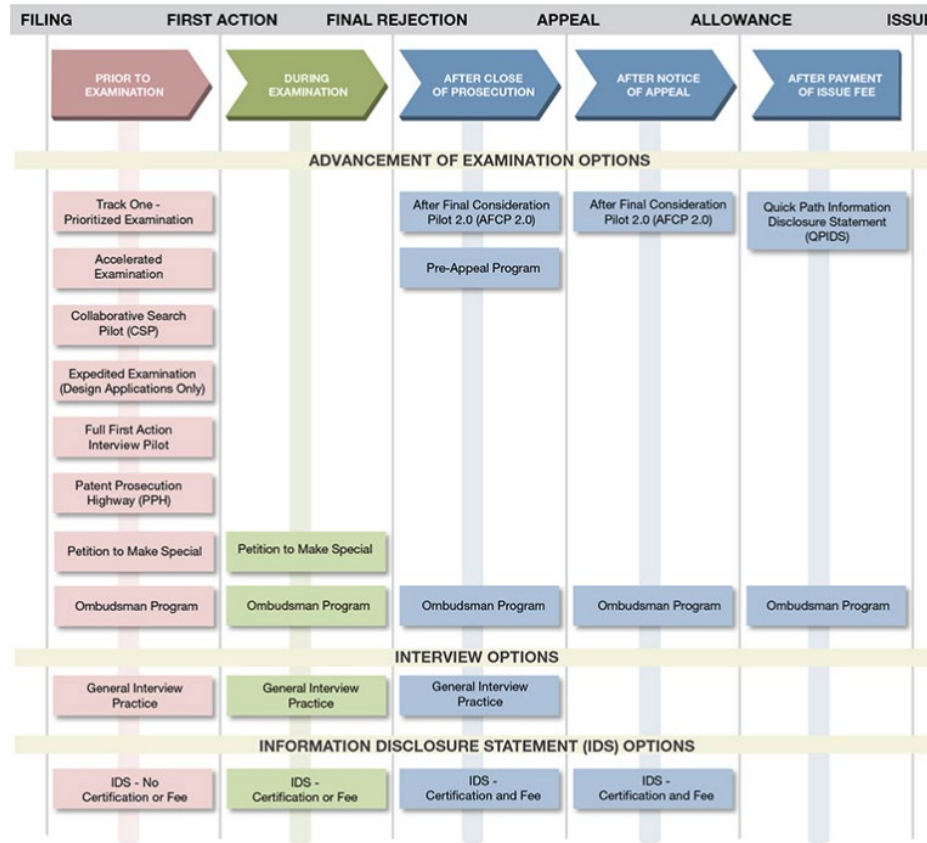
Why does the Patent Office use pilots?

- Allows the Office to assess ideas at a small scale to ensure workability before moving to large scale
 - Assess external stakeholder or examiner interest in a proposed change
 - Assess impact of a proposed change

Overview of pilot development process

- Identify issue to be tested from stakeholder feedback or internal analysis
- Work with stats shop in collaboration with the applicable union(s) to design pilot
- Draft pilot document
 - Negotiate MOU with union (internal pilot)
 - Draft Federal Register Notice (external pilot)
- Get legal clearance
- Publicize the pilot

Examples of “external” pilots



Examples of “internal” pilots

- One of the priorities of the Director of the USPTO is enhancing patent search
 - Collaborative Search Pilot
 - Office of Patent Quality Assurance (OPQA) Search Feedback Pilot

Challenges with executing pilots

- **Randomization**
 - Pilots are usually “opt in” due to concerns of unions and external stakeholders
- **Ensuring good case study design**
 - A poorly designed study can cause issues on many fronts
- **Isolating cause-and-effect**
 - Patent examination is very fact specific
 - There are many factors at play
- **Costs**
 - Training staff on new processes and implementing new processes can impose costs in terms of time and money for the Office

